



 **Jan Forster**

 **Jan Forster**

Limewood Grove | North Gosforth | Newcastle Upon Tyne | NE13 6PU

Price £275,000



3 2 1

- Popular Location
- Three Bedrooms
- Off Street Parking
- Landscaped Rear Garden
- Early Viewing Advised
- Well Presented
- Ideal First Time Buy
- Attached Garage
- Close To Amenities
- Call For More Information





* Video Tour on our YouTube Channel | <https://youtu.be/pTkN86Ekd9g> *

Situated within the popular Limewood Grove in North Gosforth, this immaculately presented, three-bedroom, semi-detached home offers spacious and modern accommodation throughout. An ideal choice for a wide range of buyers, including first-time purchasers, growing families and those looking to downsize.

The accommodation briefly comprises an inviting entrance hallway, a bright and spacious lounge/ dining room featuring an attractive bay window and French doors to the rear, and a well-appointed kitchen with ample storage, complementing worktops and an integrated oven and hob. To the first floor are three well-proportioned bedrooms together with a stylish family bathroom WC featuring an overhead shower and vanity storage. Additional benefits include gas central heating and double glazing.

Externally, an attractive block-paved driveway to the front provides off-street parking and leads to the garage. To the rear, the beautifully landscaped garden offers a perfect outdoor retreat, featuring a maintained lawn and generous patio areas ideal for relaxing, entertaining, and al fresco dining.

The location offers easy access to a wide range of local amenities, including supermarkets, well-regarded schools, and leisure facilities. It is also close to Weetslade Country Park, providing excellent opportunities for walking, cycling and enjoying the outdoors. Excellent transport connections are close at hand, with convenient access to the A1, Newcastle city centre and nearby public transport links, making it an ideal location for commuters while retaining a peaceful residential atmosphere.

This delightful home is expected to generate strong interest and early viewing is highly recommended. Please contact our sales team on 0191 236 2070 for more information.

Tenure

The agent understands the property to be freehold. However, this should be confirmed with a licenced legal representative.

Council Tax Band: C



Lounge Area 11'4" x 13'0" (3.47 x 3.97)

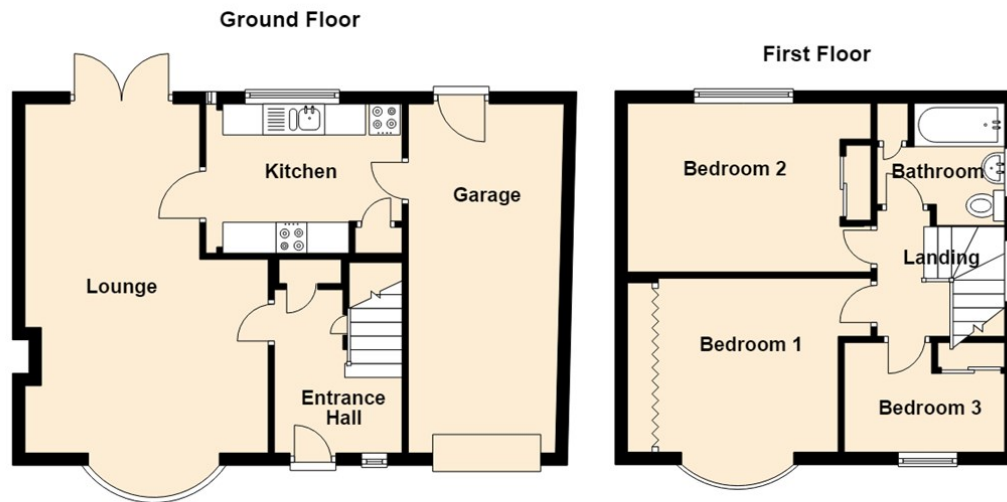
Dining Area 10'2" x 8'1" (3.10 x 2.47)

Kitchen 7'11" x 9'4" (2.43 x 2.85)

Bedroom One 10'10" x 10'10" (3.31 x 3.32)

Bedroom Two 8'8" x 12'0" (2.65 x 3.68)

Bedroom Three 8'8" x 7'8" (2.66 x 2.34)



The difference between house and home

You may download, store and use the material for your own personal use and research. You may not republish, retransmit, redistribute or otherwise make the material available to any party or make the same available on any website, online service or bulletin board of your own or of any other party or make the same available in hard copy or in any other media without the website owner's express prior written consent. The website owner's copyright must remain on all reproductions of material taken from this website.

Energy Efficiency Rating		Current	Potential
Very energy efficient - lower running costs			
(92 plus) A			
(81-91) B			82
(69-80) C			
(55-68) D	68		
(39-54) E			
(21-38) F			
(1-20) G			
Not energy efficient - higher running costs			
England & Wales		EU Directive 2002/91/EC	

Contact Us: 0191 236 2070



www.janforsterestates.com

