





- Professional Landlord
- White Goods Included
- Pets Considered
- Long Term Tenancies Available
- Brand New Property
- Off Road Parking
- Call For More Information
- Zero deposit option available





\* SECOND MONTH RENT FREE \*

ZERO DEPOSIT OPTION AVAILABLE. Jan Forster Estates are delighted to offer this brand new 'Norbury', located in the magnificent new development in Meadow Hill in Throckley.

An impressive three-storey home designed to offer both elegance and practicality. The ground floor opens with a modern kitchen and a spacious lounge diner. French doors extend the living space into the garden, complemented by a convenient WC and a handy storage cupboard.

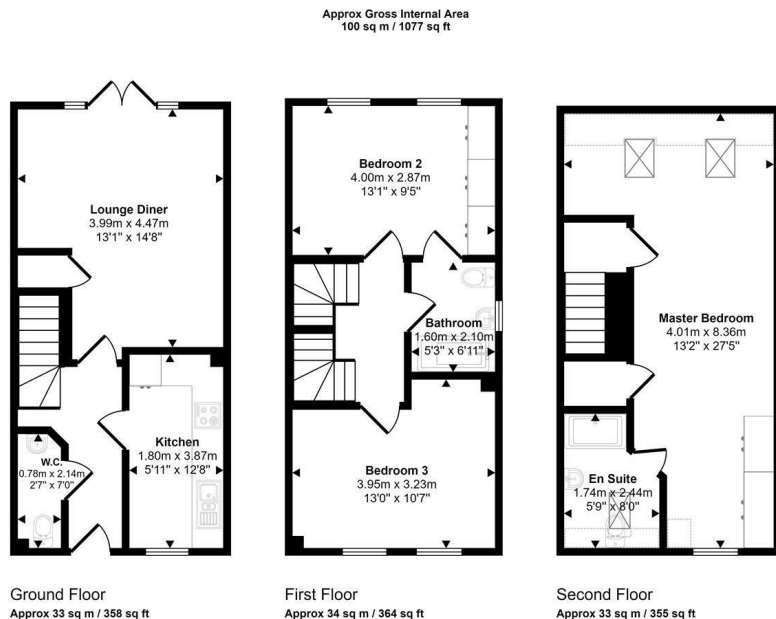
The first floor presents two generous double bedrooms, both thoughtfully designed with excellent storage and floor space. A contemporary bathroom sits centrally, serving both rooms with style and ease. Occupying the entire top floor is the main suite, which is complete with a dressing area, ensuite, and additional storage.

Meadow Hill lies at the centre of Throckley in Northumberland. Located just 7 miles west of Newcastle city centre, it's the ideal base yet is still within easy reach of the city's shops, bars, restaurants, theatres and museums. Just a short drive to Ponteland (4.2 miles) or Jesmond (8.1 miles) open a further choice of green spaces, riverside walkways, boutiques, cafes and restaurants.

Lomond, on behalf of Lloyds Living, part of Lloyds Banking Group, operates a growing portfolio of more than 3,000 professionally managed homes for rent, improving access to good value, quality, sustainable housing across the UK. Lloyds Living helps to support investment into local communities by building and renting homes that people want, in the places they are needed.

Property features and specifications may vary on a plot-by-plot basis. Whilst every attempt has been made to ensure accuracy, all measurements are approximate and not to scale. Computer-generated images, floor plans, and photos (CGIs) are for illustrative purposes only and may not represent the final design or finish of the property. For more information on layouts & specifications, please speak to your Lloyds Living representative.

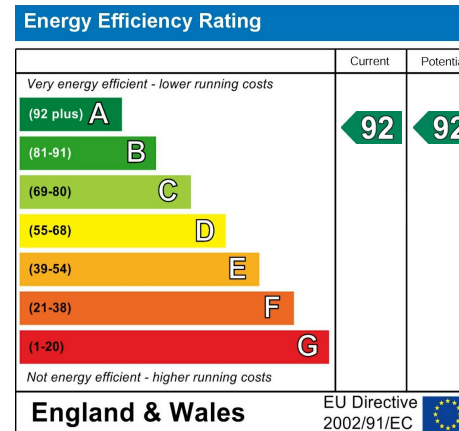




Denotes head height below 1.5m  
Whilst every attempt has been made to ensure the accuracy of the floor plan contained here, measurements of doors, windows, rooms and any other items are approximate and no responsibility is taken for any error, omission, or mis-statement. The measurements should not be relied upon for valuation, transaction and/or funding purposes. This plan is for illustrative purposes only and should be used as such by any prospective purchaser or tenant.

## The difference between house and home

You may download, store and use the material for your own personal use and research. You may not republish, retransmit, redistribute or otherwise make the material available to any party or make the same available on any website, online service or bulletin board of your own or of any other party or make the same available in hard copy or in any other media without the website owner's express prior written consent. The website owner's copyright must remain on all reproductions of material taken from this website.



[www.janforsterestates.com](http://www.janforsterestates.com)

Contact Us: 0191 236 2070

