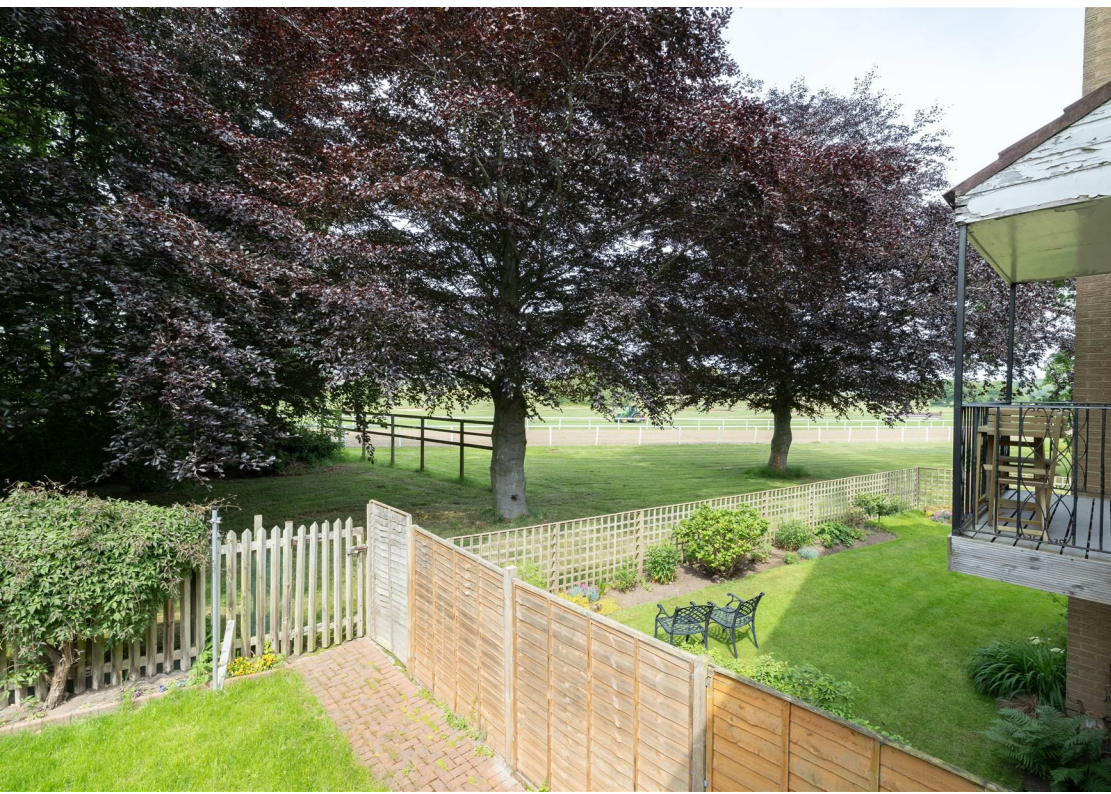








- Two Bedrooms
- Car Port
- Desirable Address
- Utility Area
- Leasehold
- First Floor Flat
- Private Garden
- Race Course Views
- Close To Amenities
- Council Tax band \*C\*







This spacious, two bedroom first floor apartment is located in the exclusive development of Brandling Mews, within the ever desirable Melton Park estate. The property is ideal for a variety of buyers including a professional person or couple, retired people or those wanting to downsize.

The location is close to a wealth of amenities including well regarded schools, shops, post office, pharmacy and leisure facilities with further amenities offered in Gosforth and Newcastle via regular public transport links and the A1 motorway.

Internally the accommodation is well presented throughout and briefly comprises to the ground floor: - entrance foyer with utility area and stairs leading to the first floor. On the first floor you are greeted with lounge/dining room boasting race course views, modern fitted kitchen, two bedrooms with ample storage and a shower room with WC. Also benefiting from double glazing and gas central heating. Externally there is a private garden and car port parking.

This property really does have to be viewed to appreciate the standard of accommodation on offer. Please call our team on 0191 236 2070 for more information.

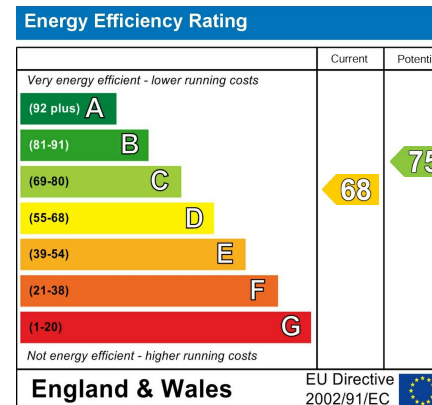
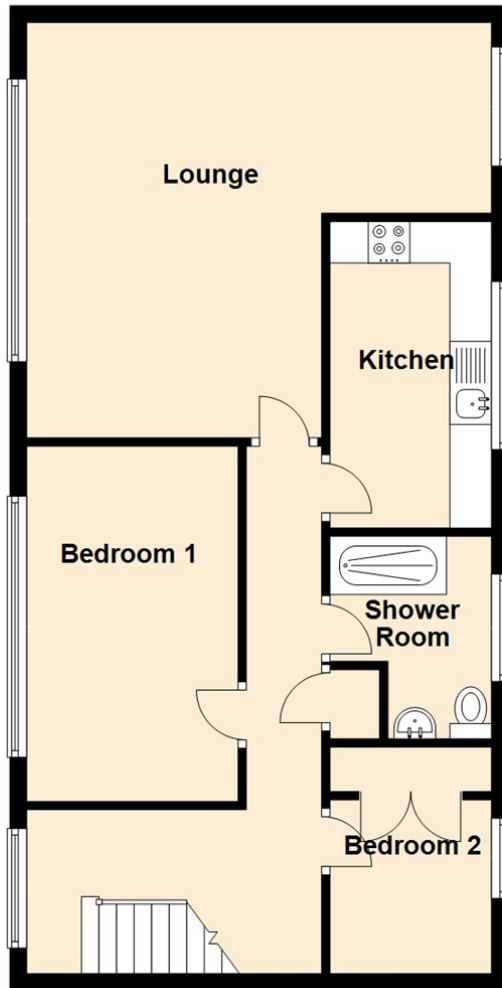
#### Tenure

The agent understands the property to be leasehold. However, this should be confirmed with a licensed legal representative.

Council Tax band \*C\*



## First Floor



## The difference between house and home

You may download, store and use the material for your own personal use and research. You may not republish, retransmit, redistribute or otherwise make the material available to any party or make the same available on any website, online service or bulletin board of your own or of any other party or make the same available in hard copy or in any other media without the website owner's express prior written consent. The website owner's copyright must remain on all reproductions of material taken from this website.



[www.janforsterestates.com](http://www.janforsterestates.com)

Gosforth  
High Heaton  
Tynemouth  
Property Management Centre

0191 236 2070  
0191 270 1122  
0191 257 2000  
0191 236 2680

