



 Jan Forster



Beech Court | Cygnet Park | Newcastle Upon Tyne | NE12 5AE
Price £258,995



3



1



2

- Detached Family Home
- Popular Location
- Garage & Driveway
- Freehold
- NO ONWARD CHAIN
- Three Bedrooms
- Open Plan Living
- Ground Floor WC
- Council Tax Band *D*
- PX with Avant Homes





**** Video Tour on our YouTube Channel | <https://youtu.be/1bslz9oC5Qc> ****

This three-bedroom detached family home is located in the sought-after Cygnet Park development and offers a perfect combination of modern living and comfort. As a new build, the emphasis is on spacious, light-filled rooms and quality finishes throughout.

The property is located within easy reach of local amenities, schools, and transport links, making it an ideal choice for families looking for convenience and comfort. Weetslade Country Park is also within walking distance and offers residents a local outdoor escape.

Upon entering, you are greeted by a spacious and airy open-plan living area, designed with contemporary living in mind. The fully fitted kitchen flows effortlessly into the lounge/dining room. Bi-fold doors to the rear invite natural light into the room, enhancing the feeling of space and connection to the outdoors. There is also a handy ground floor WC.

Upstairs, the main bedroom features its own private en-suite bathroom, offering both privacy and luxury. The two additional bedrooms are well-sized, providing versatile space for family members, guests, or even a home office. A modern family bathroom WC completes the upper floor. Further benefits include gas central heating, double glazing, and ample storage.

Externally, the property boasts a detached garage for secure parking or additional storage, while the driveway offers further off-road parking. The paved rear garden provides an excellent low-maintenance outdoor area, perfect for enjoying the sunshine or hosting barbecues with friends and family.

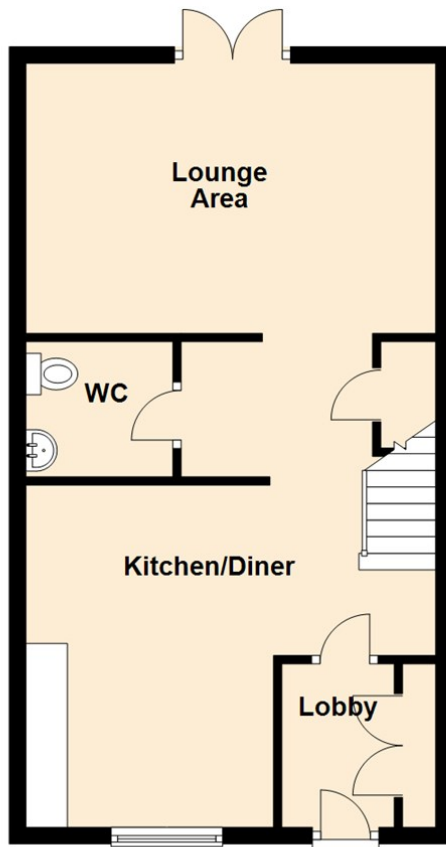
Tenure

The agent understands the property to be freehold. However, this should be confirmed with a licenced legal representative.

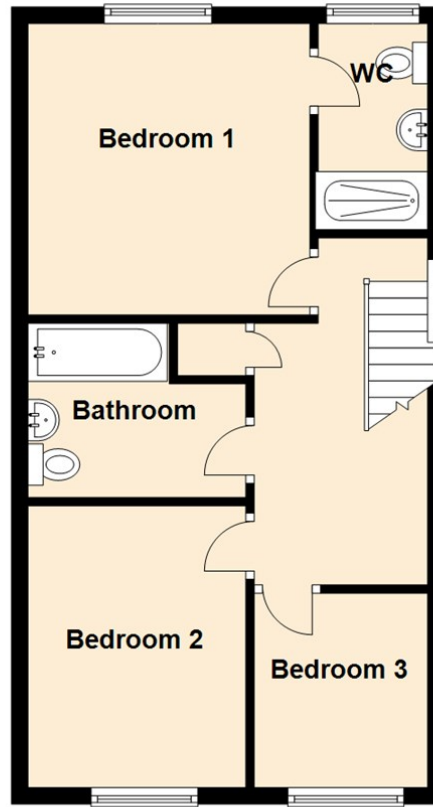
For more information and to book a viewing please call our Heaton branch on 0191 270 1122.

Council Tax band *D*

Ground Floor



First Floor



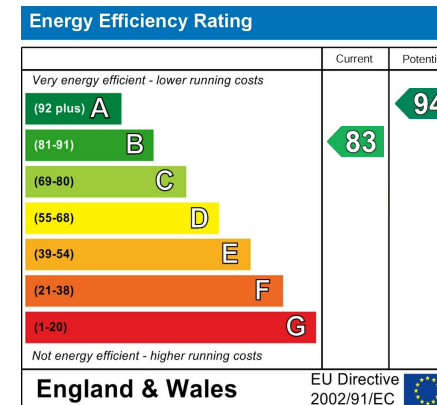
Lounge 16'2" x 10'8" (4.93 x 3.27)

Kitchen 16'2" x 13'6" (4.93 x 4.12)

Bedroom One 11'8" x 10'7" (3.57 x 3.25)

Bedroom Two 12'1" x 11'1" (3.69 x 3.39)

Bedroom Three 7'8" x 6'9" (2.35 x 2.07)



The difference between house and home

You may download, store and use the material for your own personal use and research. You may not republish, retransmit, redistribute or otherwise make the material available to any party or make the same available on any website, online service or bulletin board of your own or of any other party or make the same available in hard copy or in any other media without the website owner's express prior written consent. The website owner's copyright must remain on all reproductions of material taken from this website.



www.janforsterestates.com

Gosforth
High Heaton
Tynemouth
Property Management Centre

0191 236 2070
0191 270 1122
0191 257 2000
0191 236 2680

