







- Semi Detached
- Open Plan Living
- Off Street Parking
- Excellent Amenities
- Council Tax Band \*A\*
- Superbly Presented
- Two Bedrooms
- Walking Distance to Metro
- Freehold
- Viewing Recommended





**\*\* Video Tour on our YouTube Channel |  
<https://youtu.be/XdQXwgc8KzM> \*\***

Jan Forster Estates are delighted to welcome to the market this spacious two-bedroom semi-detached home on Craster Avenue, in Palmersville. This property is in an ideal location, within walking distance to Metro and bus links and also within close proximity to local shops and schools.

The ground floor briefly comprises: - entrance hallway with storage, open plan lounge, kitchen dining room with fitted units and French doors to the rear and there is also a handy utility room. On the first floor there are two double bedrooms and a family bathroom WC with shower over the bath and under sink storage. Further benefits include gas central heating and double glazing.

Externally, the property boasts a well-maintained garden to the front and a paved driveway providing convenient off-street parking. To the rear, you'll find a charming garden featuring a patio area, a neat lawn, and the added bonus of a stylish garden room - a perfect space for relaxing, working from home.

We anticipate an extremely high level of viewings on this impressive home, which is ideal for first time buyers, growing families and buy to let investors alike. To arrange your viewing please call our sales team on 0191 270 1122.

#### Tenure

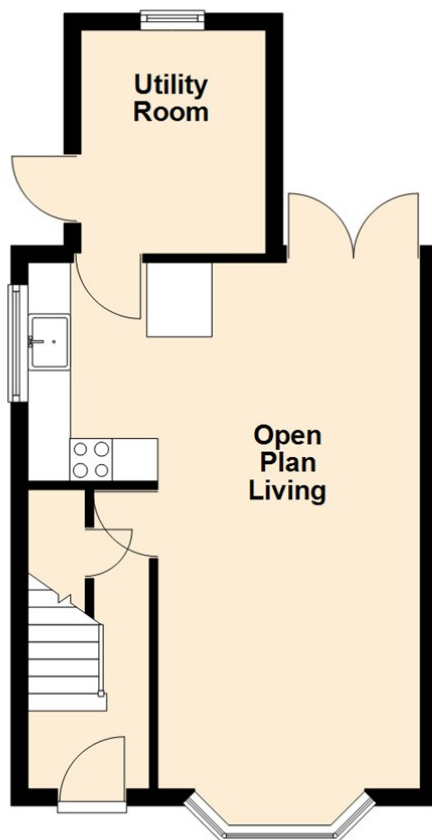
The agent understands the property to be freehold. However, this should be confirmed with a licenced legal representative.

Council Tax band \*A\*.

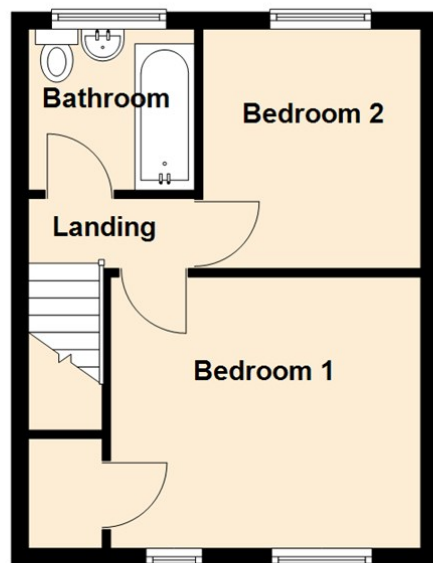




Ground Floor



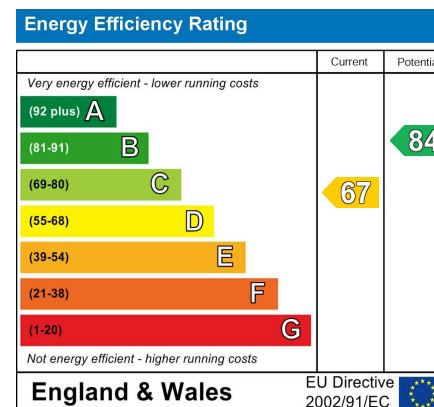
First Floor



Lounge, Kitchen Dining Room 22'2" x 17'8" (6.78 x 5.41)

Bedroom One 14'3" x 10'6" (4.35 x 3.22)

Bedroom Two 10'8" x 9'5" (3.26 x 2.88)



## The difference between house and home

You may download, store and use the material for your own personal use and research. You may not republish, retransmit, redistribute or otherwise make the material available to any party or make the same available on any website, online service or bulletin board of your own or of any other party or make the same available in hard copy or in any other media without the website owner's express prior written consent. The website owner's copyright must remain on all reproductions of material taken from this website.



[www.janforsterestates.com](http://www.janforsterestates.com)

Gosforth  
High Heaton  
Tynemouth  
Property Management Centre

0191 236 2070  
0191 270 1122  
0191 257 2000  
0191 236 2680

