





- Popular Location
- No Onward Chain
- Ideal Starter Home
- Private Rear Yard
- Viewing Recommended
- Ground Floor
- Two Bedrooms
- Close To Amenities
- Council Tax Band *A*
- Call For More Information





**** Video Tour on our YouTube Channel |
<https://youtu.be/HdoD7Dm1d7Y> ****

This well presented, two-bedroom ground floor flat is positioned in the popular Cleveland Avenue in North Shields. The property has been freshly decorated throughout and will make a great starter home.

Internally the property briefly comprises: - entrance hall with storage, bright and airy main double bedroom, bedroom two, spacious lounge with feature cast iron fireplace and a modern well-appointed kitchen with fitted units, integrated oven and hob, rear lobby with access outside and a stylish bathroom WC. Further benefits include gas central heating, double glazing and externally there is a private yard to the rear.

The central location is close to a wealth of local amenities including cafes, bars, and restaurants, offering plenty of options for dining and socializing. The beach is within easy reach and perfect for enjoying the coastal walks. There are excellent transport links in the area including the A1058 Coast Road which makes accessing Newcastle City Centre quick and convenient. Public transport is also readily available, with key bus routes and the nearby Metro service ensuring excellent connectivity. For growing family, the property is well positioned for access to very well-regarded schools.

For more information and to arrange a viewing, please call our Tynemouth branch on 0191 257 2000.

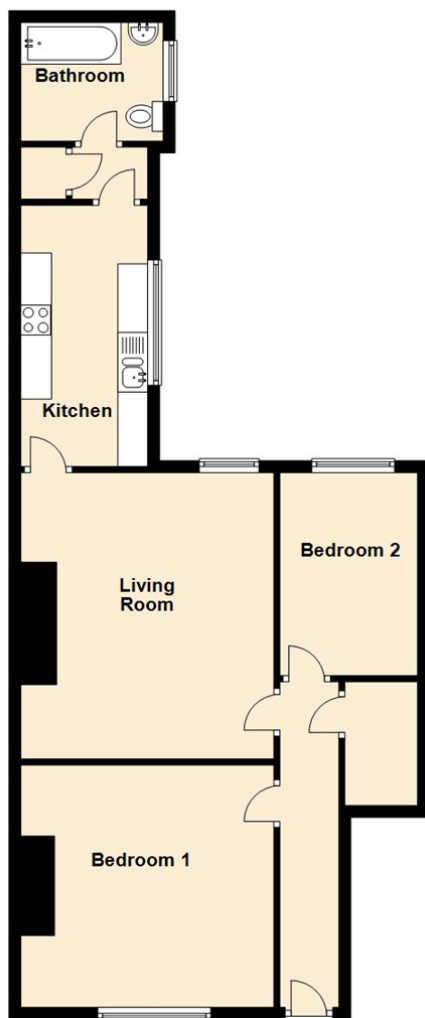
Tenure

The agent understands the property to be leasehold. However, this should be confirmed with a licenced legal representative.

Council Tax band *A*.



Ground Floor

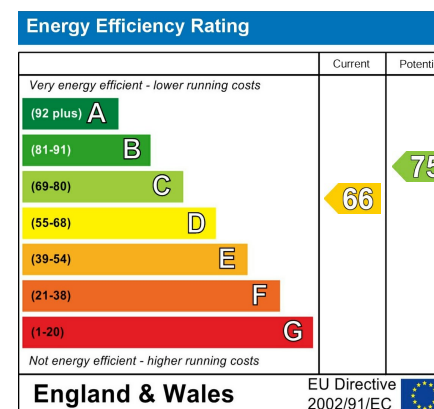


Living Room 15'9" x 13'11" (4.81 x 4.25)

Kitchen 14'4" x 6'11" (4.39 x 2.13)

Bedroom One 13'4" x 13'11" (4.07 x 4.25)

Bedroom Two 11'2" x 7'10" (3.41 x 2.41)



The difference between house and home

You may download, store and use the material for your own personal use and research. You may not republish, retransmit, redistribute or otherwise make the material available to any party or make the same available on any website, online service or bulletin board of your own or of any other party or make the same available in hard copy or in any other media without the website owner's express prior written consent. The website owner's copyright must remain on all reproductions of material taken from this website.



www.janforsterestates.com

Gosforth
High Heaton
Tynemouth
Property Management Centre

0191 236 2070
0191 270 1122
0191 257 2000
0191 236 2680

