





- First Floor
- Open Plan Living
- No Upper Chain
- Leasehold
- Viewing Recommended
- Two Bedrooms
- Rear Yard
- Excellent Amenities Nearby
- Council Tax Band *A*
- Call For More Information





This charming, first floor, two-bedroom property is positioned on the sought after Addycombe Terrace in Heaton. The property will make an ideal first time buy and is offered for sale with the benefit of no upper chain.

The property is accessed via an entrance hallway with stairs to the first floor and briefly comprises: -entrance hall, spacious lounge through dining room with a bay window and feature fireplace and there is a kitchen with fitted wall and floor units. There are two good sized bedrooms and a modern bathroom WC.

Externally, the property has a private yard to the rear and there is also on street parking to the front.

The location is in a highly desirable area of Heaton, offering convenient access to a wide range of local amenities and excellent transport connections. It is ideally located near the vibrant Chillingham Road, which is well known for its variety of shops, cafes, and services. Public transport options are plentiful, with both Metro stations and frequent bus routes nearby, making travel around the city effortless. In addition, the location provides easy access to Newcastle Business Park and the city centre.

We anticipate an extremely high level of viewings on this spacious family home. To arrange yours or for more information please call our Heaton branch on 0191 270 1122.

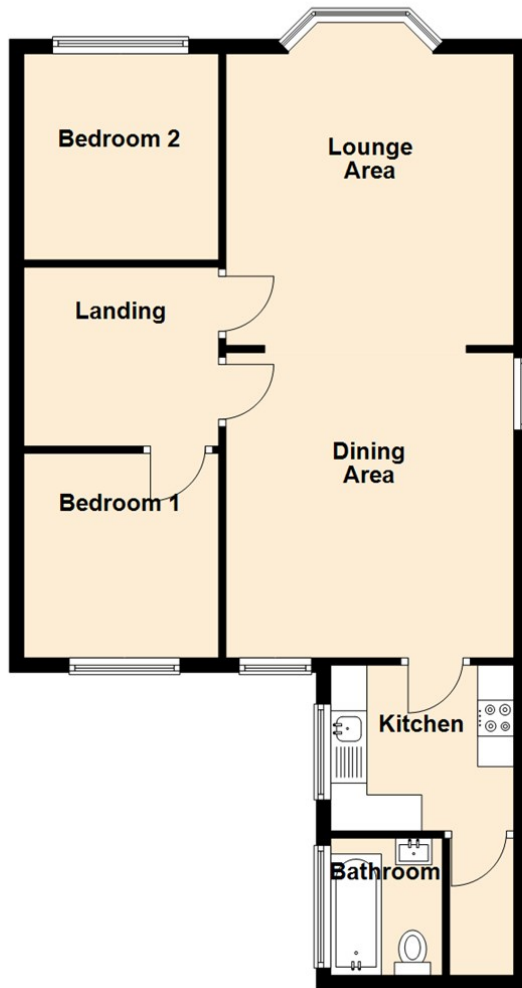
Tenure

The agent understands the property to be leasehold. However, this should be confirmed with a licenced legal representative.

Council Tax band *A*



First Floor



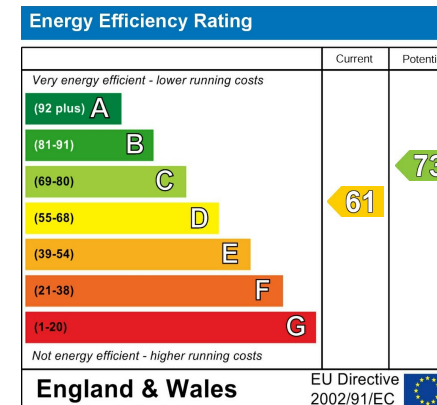
Lounge 13'0" x 13'2" (3.98 x 4.03)

Kitchen 6'7" x 7'9" (2.02 x 2.37)

Dining Room 13'0" x 13'10" (3.98 x 4.23)

Bedroom One 9'4" x 8'11" (2.85 x 2.72)

Bedroom Two 9'5" x 8'11" (2.88 x 2.72)



The difference between house and home

You may download, store and use the material for your own personal use and research. You may not republish, retransmit, redistribute or otherwise make the material available to any party or make the same available on any website, online service or bulletin board of your own or of any other party or make the same available in hard copy or in any other media without the website owner's express prior written consent. The website owner's copyright must remain on all reproductions of material taken from this website.



www.janforsterestates.com

Gosforth
High Heaton
Tynemouth
Property Management Centre

0191 236 2070
0191 270 1122
0191 257 2000
0191 236 2680

