





3



1



2

- Mid Terrace House
- Off Street Parking
- En-Suite Facility
- Ample Storage
- Unfurnished Basis
- Three Bedrooms
- Garden
- Ground Floor WC
- New Build Development
- Available NOW





**** Video Tour on our YouTube Channel |
<https://youtu.be/rQeGb24aOic> ****

This newly built three bedroom terrace house is situated on the new development of West Meadows, Cramlington. The property is available NOW on an unfurnished basis.

The accommodation briefly comprises to the ground floor:- hallway, bright and airy lounge, fantastic kitchen/diner with fitted units and patio doors leading to the rear garden, and ground floor WC. To the first floor, you have three good-sized bedrooms, two of which with built-in wardrobes and the main with en-suite shower room, and there is a three piece family bathroom WC with a shower over the bath. Externally there is a lawned garden to the rear and off-street parking to the front.

We anticipate an extremely high level of viewings on this charming property. To arrange yours please call our lettings team on 0191 270 1122.

Council Tax band *TBC*

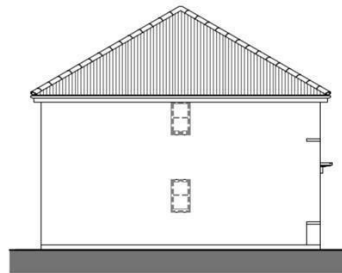




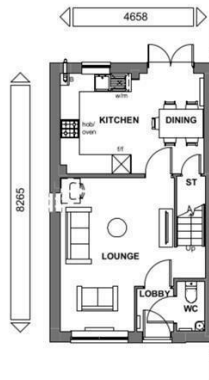
FRONT ELEVATION



REAR ELEVATION



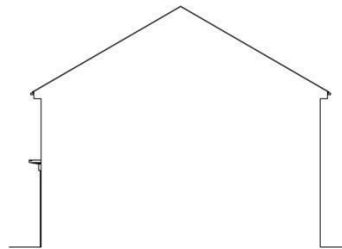
SIDE ELEVATION



GROUND FLOOR



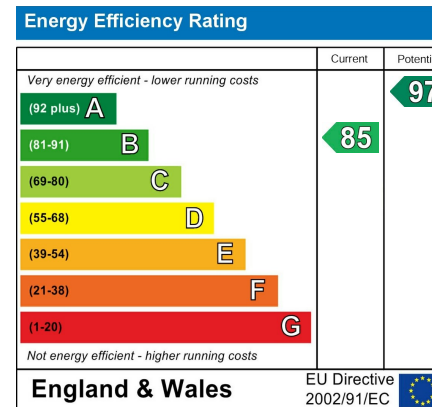
FIRST FLOOR



SIDE ELEVATION

The difference between house and home

You may download, store and use the material for your own personal use and research. You may not republish, retransmit, redistribute or otherwise make the material available to any party or make the same available on any website, online service or bulletin board of your own or of any other party or make the same available in hard copy or in any other media without the website owner's express prior written consent. The website owner's copyright must remain on all reproductions of material taken from this website.



Gosforth
 Newcastle
 High Heaton
 Tynemouth
 Low Fell
 Property Management Centre

0191 236 2070
 0191 284 4050
 0191 270 1122
 0191 257 2000
 0191 487 0800
 0191 236 2680



www.janforsterestates.com

