





3



1



1

- Amazing Coastal Maisonette
- Three Bedroom Home
- Seconds Away From The Beach
- Private Garage
- Leasehold Property
- Delightful Main Reception Room
- Private Roof Terrace
- Contemporary Kitchen Area
- Ground Floor W/C & Separate Bathroom with Shower
- Council Tax Band *C*





If you are in the housing market for a quality coastal home that ticks all of the boxes, this superbly presented and sizable maisonette is without doubt a property that should be viewed as soon as possible. Offered for sale with the benefit of no upper chain.

The living space is very generous and very versatile and offers so much in the way for coastal living. Spread over three floors, the property is quite unique in layout. On the first floor you have a fabulous living room with period features, a great kitchen which has an industrial theme with shelving and floor units along with an island and there is a fully tiled bathroom WC with walk-in shower. There is also a bedroom on this floor and also access to a private roof terrace. From the first floor there is a stair case to the ground floor which offers up a utility room, WC and access to a garage. The second floor has a further two bedrooms; the main bedroom with ample storage. The stairway and landing wall have been stripped which has exposed the natural brick and makes for a great feature. Further benefits include double glazing and gas central heating; the property is warm and welcoming.

The location of the property is very much in demand and is essentially owner occupied giving a true residential living experience. Very well located for access to local amenities such as shops, schools and public travel links. You are within easy striking distance of the A1058 Coast Road and of course our award winning blue flag beaches. The Metro service is also available and is some 15 minutes' walk away providing access to Newcastle city centre and many main Tyneside centres.

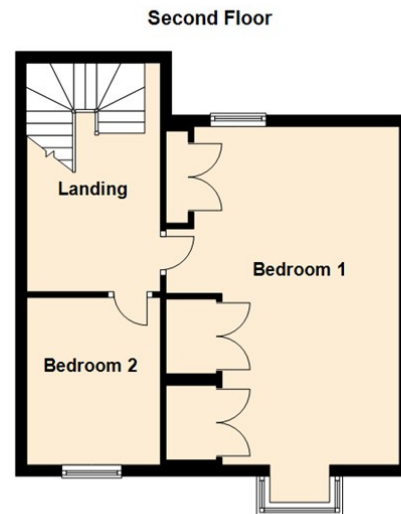
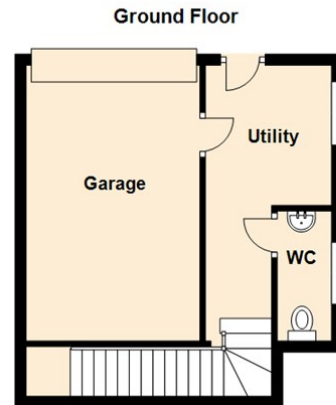
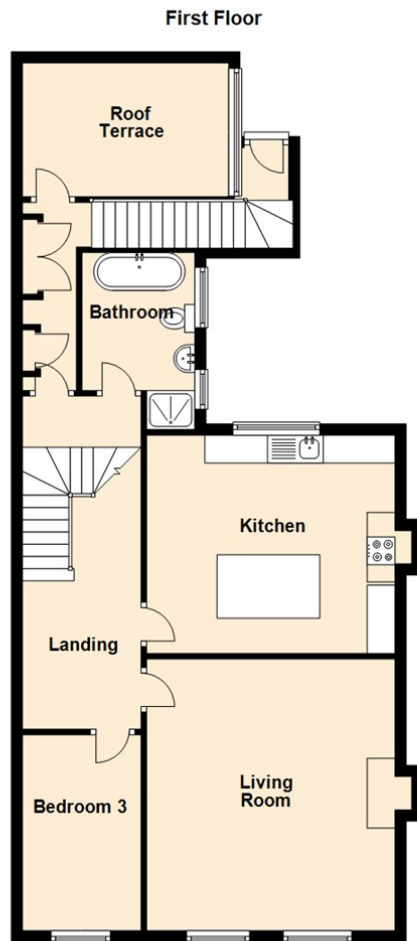
Interested parties are urged to arrange a prompt and essential internal viewing. Don't delay. Please call our Tynemouth branch on 0191 257 2000.

Tenure

The agent understands the property to be leasehold. However, this should be confirmed with a licenced legal representative.

Council Tax band *C*.





Living Room 16'0" x 14'7" (4.88 x 4.46)

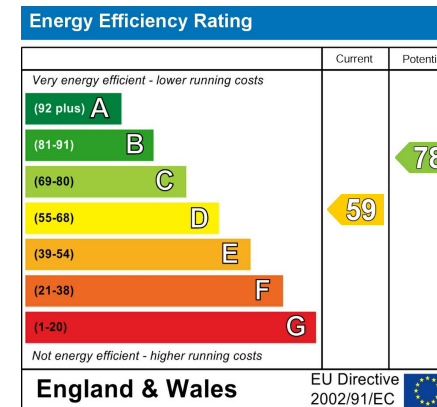
Kitchen 12'10" x 14'7" (3.92 x 4.46)

Utility Room 16'2" x 7'5" (4.95 x 2.27)

Bedroom One 19'11" x 13'8" (6.08 x 4.19)

Bedroom Two 9'10" x 8'3" (3.01 x 2.54)

Bedroom Three 11'6" x 6'11" (3.52 x 2.13)



The difference between house and home

You may download, store and use the material for your own personal use and research. You may not republish, retransmit, redistribute or otherwise make the material available to any party or make the same available on any website, online service or bulletin board of your own or of any other party or make the same available in hard copy or in any other media without the website owner's express prior written consent. The website owner's copyright must remain on all reproductions of material taken from this website.



www.janforsterestates.com

Gosforth

0191 236 2070

Newcastle

0191 284 4050

High Heaton

0191 270 1122

Tynemouth

0191 257 2000

Low Fell

0191 487 0800

Property Management Centre

0191 236 2680

