





2



1



1

- **FULLY REFURBISHED**
- **No Forward Chain**
- **Utility/Sun Room**
- **Four Piece Bathroom**
- **Freehold**
- **Two Double Bedrooms**
- **Open Plan Living**
- **Garage & Drive**
- **South Facing Rear Garden**
- **Council Tax Band *B***





**** Video Tour on our YouTube Channel |
<https://youtu.be/f4hIVTXmRGY> ****

FULLY REFURBISHED | NO FORWARD CHAIN | SOUTH FACING REAR GARDEN

Welcome to Bowes Street, South Gosforth, Newcastle Upon Tyne - a charming location for this delightful semi-detached house. As you step inside, you'll be greeted by a beautifully refurbished property boasting an open plan living space, perfect for entertaining guests or simply relaxing with your loved ones.

This lovely house offers open plan living, ideal for cosy evenings in, a sun room that could be transformed into a handy utility space which has French doors to the garden, two bedrooms offering comfortable living spaces, and a modern four piece bathroom with walk in shower for your convenience. The property also benefits from a south-facing rear garden, allowing you to soak up the sun and enjoy outdoor activities right at your doorstep.

Parking will never be an issue with a drive offering off street parking which leads to the garage, making coming home a breeze. Whether you're a first-time buyer, a small family, or someone looking to downsize, this house offers a warm and inviting atmosphere that you'll be proud to call home.

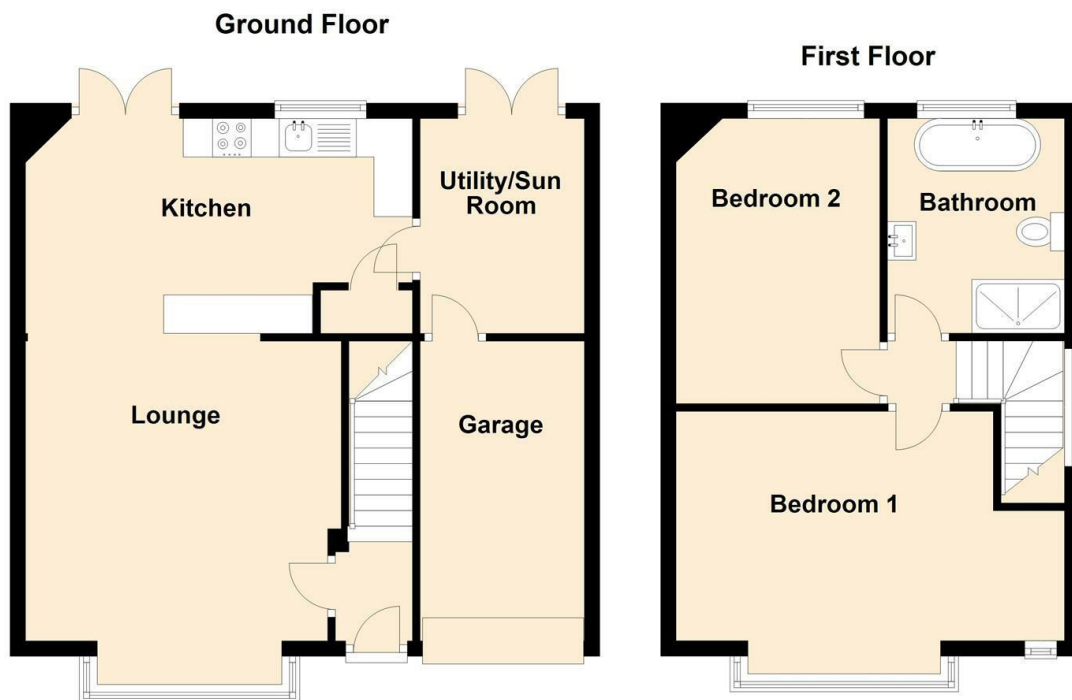
Don't miss out on the opportunity to make this immaculate property in South Gosforth your own - book a viewing today and start envisioning the life you could create in this wonderful home.

Tenure

The agent understands the property to be freehold. However, this should be confirmed with a licenced legal representative.

Council Tax band *B*





Lounge Area 13'3" x 16'0" (4.06 x 4.88)

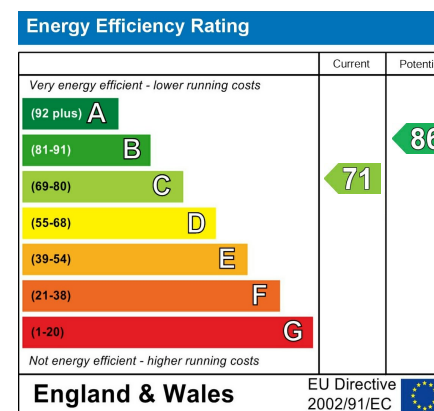
Kitchen Area 16'5" x 9'0" (5.02 x 2.76)

Sun Room/Utility 8'6" x 6'7" (2.60 x 2.03)

Bedroom One 16'7" x 13'1" (5.08 x 4.00)

Bedroom Two 12'0" x 8'11" (3.67 x 2.72)

Bathroom 7'5" x 8'10" (2.27 x 2.70)



The difference between house and home

You may download, store and use the material for your own personal use and research. You may not republish, retransmit, redistribute or otherwise make the material available to any party or make the same available on any website, online service or bulletin board of your own or of any other party or make the same available in hard copy or in any other media without the website owner's express prior written consent. The website owner's copyright must remain on all reproductions of material taken from this website.



www.janforsterestates.com

Gosforth

0191 236 2070

Newcastle

0191 284 4050

High Heaton

0191 270 1122

Tynemouth

0191 257 2000

Low Fell

0191 487 0800

Property Management Centre

0191 236 2680

