





- Three Bedrooms
- Private Rear Yard
- Leasehold
- Popular Location
- Lower Maisonette
- Close to Saltwell Park
- Council Tax Band *A*
- Viewing Recommended





Offered for sale with no upper chain this charming three bedroom lower maisonette must be viewed. Located within a popular residential area close to Saltwell Park and excellent transport links, the property will appeal to a variety of buyers.

Internally the property briefly comprises to the ground floor; entrance hallway, three bedrooms; two of which are doubles, and a family bathroom WC with three piece suite including a free standing bath and under sink storage. To the lower level there is a spacious hallway, bright and airy lounge/dining room and a kitchen. The property further benefits from gas central heating and double glazing. Externally there is a town garden to the front and private yard to the rear.

Early viewings come highly recommended. For more information and to book a viewing please call our Low Fell branch on 0191 487 0800.

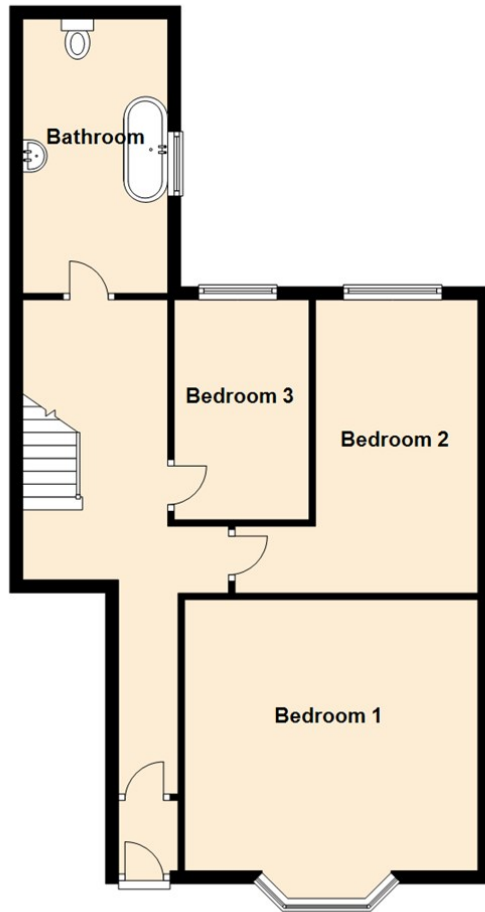
Tenure

The agent understands the property to be leasehold. However, this should be confirmed with a licensed legal representative.

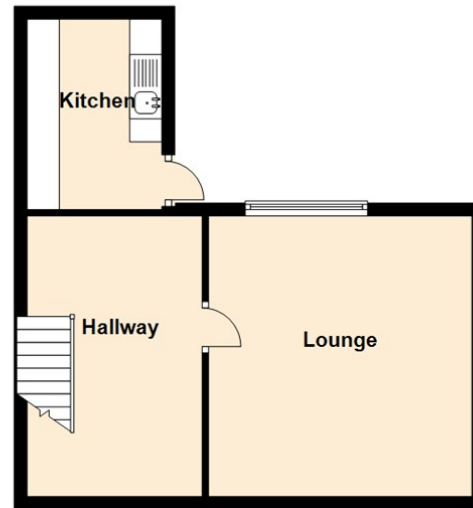
Council Tax Band *A*



Ground Floor



First Floor



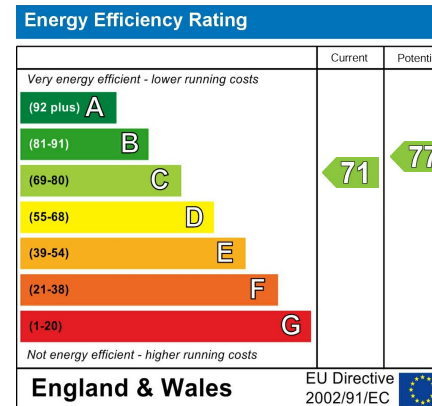
Lounge 13'3" x 14'4" (4.05 x 4.37)

Kitchen 9'4" x 7'5" (2.86 x 2.27)

Bedroom One 14'11" x 13'9" (4.56 x 4.21)

Bedroom Two 12'4" x 14'11" (3.78 x 4.55)

Bedroom Three 6'10" x 11'6" (2.10 x 3.53)



The difference between house and home

You may download, store and use the material for your own personal use and research. You may not republish, retransmit, redistribute or otherwise make the material available to any party or make the same available on any website, online service or bulletin board of your own or of any other party or make the same available in hard copy or in any other media without the website owner's express prior written consent. The website owner's copyright must remain on all reproductions of material taken from this website.



www.janforsterstates.com

Gosforth

0191 236 2070

Newcastle

0191 284 4050

High Heaton

0191 270 1122

Tynemouth

0191 257 2000

Low Fell

0191 487 0800

Property Management Centre

0191 236 2680

