





3



1



1

- Available 15th June
- Ground Floor Maisonette
- Part Furnished
- Open Plan Living
- Walking Distance To City Centre
- Close To University
- Three Bedrooms
- Permit Resident Parking
- Council Tax Band *A*





THREE BEDROOMS | CLOSE TO CITY CENTRE & UNIVERSITY | RESIDENT PERMIT PARKING

Jan Forster Estates welcome to the market this immaculate maisonette situated in an area most popular with students, academics or simply those who need to live close to the many unrivalled amenities of the city, including restaurants, cafes and shops. Both Universities of Newcastle and Northumbria are a short walk away as are the shops of Northumberland Street and Eldon Square. Boasting an NE2 postcode, this property is convenient for access to Jesmond, either on foot or by public transport. To the South the Quayside is within walking distance.

Briefly comprising; entrance hallway, open plan living kitchen area with ample storage, breakfasting bar and access to the enclosed garden. Off the landing to the first floor there are three generous bedrooms and the three piece bathroom with shower over the bath.

Externally there is a small courtyard garden to the front as well as permit resident parking and there is an enclosed South facing garden to the rear overlooking the green.

For more information and to book your viewing please call out team on 0191 236 2070.

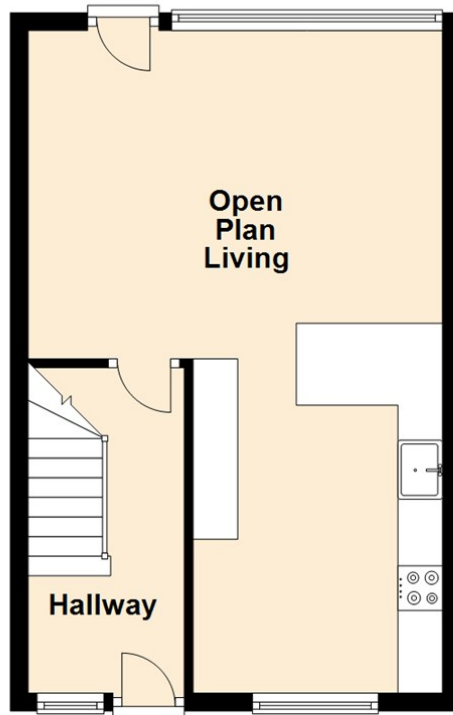
COVID-19 Guidelines

Although it is not mandatory, we do recommend that viewers wear appropriate PPE to protect themselves and others.

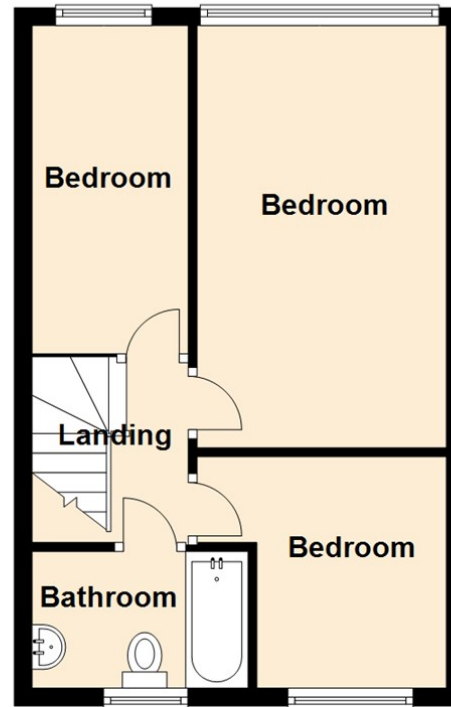
Council Tax band *A*



Ground Floor



First Floor

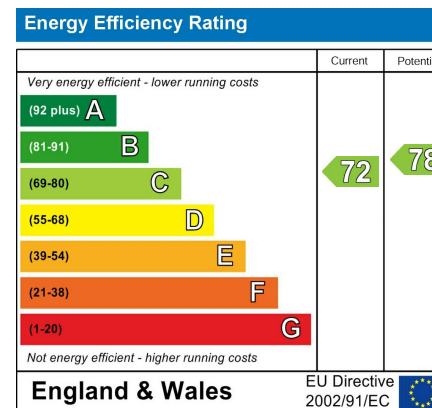


The difference between house and home

You may download, store and use the material for your own personal use and research. You may not republish, retransmit, redistribute or otherwise make the material available to any party or make the same available on any website, online service or bulletin board of your own or of any other party or make the same available in hard copy or in any other media without the website owner's express prior written consent. The website owner's copyright must remain on all reproductions of material taken from this website.



www.janforsterestates.com



Gosforth

0191 236 2070

Newcastle

0191 284 4050

High Heaton

0191 270 1122

Tynemouth

0191 257 2000

Low Fell

0191 487 0800

Property Management Centre

0191 236 2680

