





- Ideal First Time Buy
- Modern Kitchen
- Double Glazing
- Close to Amenities
- Leasehold
- Ground Floor Flat
- Popular Location
- Communal Gardens
- Council Tax Band *A*
- Call For More Information





**** Video Tour on our YouTube Channel | <https://youtu.be/BC7lpPPBMh0> ****

This two-bedroom, ground floor flat is now available on the ever popular Whalton Court, in Gosforth. Offered for sale with the benefit of no upper chain.

The property is well placed for local schools, supermarkets, shops and the Metro station with further amenities being offered on Gosforth High Street and Newcastle city centre.

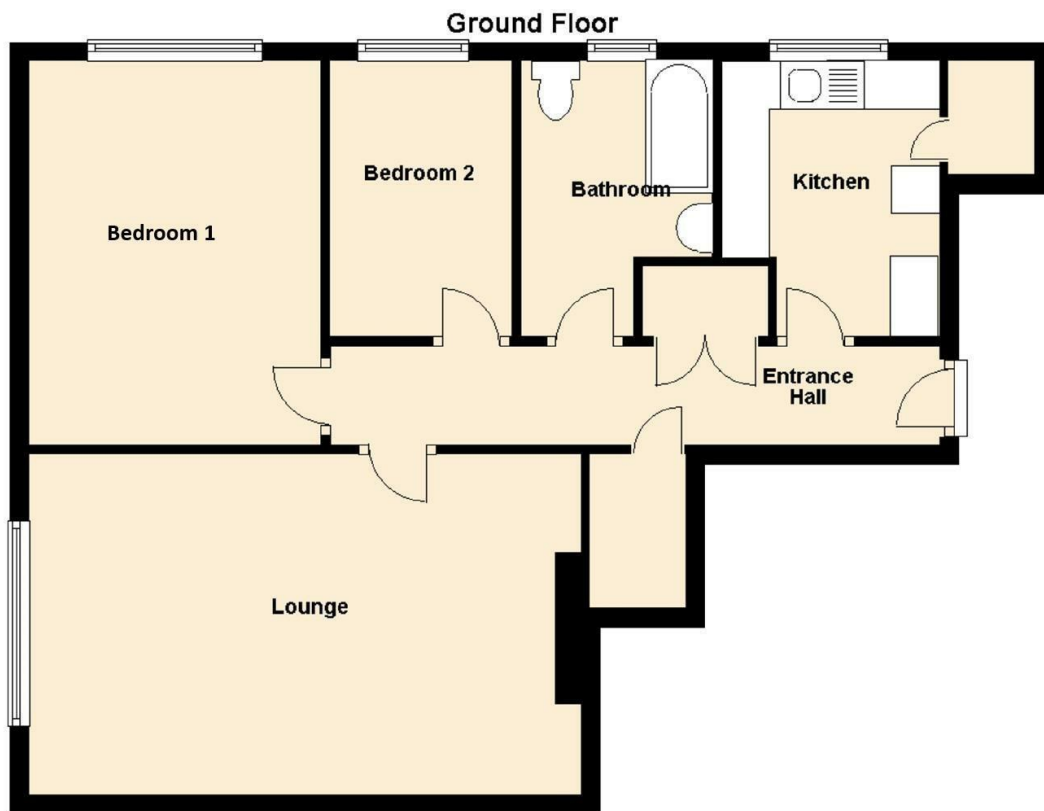
The property is accessed via a communal entrance and briefly comprises: - entrance hall with storage, bright and airy lounge, kitchen with floor and wall units, two double bedrooms, and a bathroom/WC. Further benefits include gas central heating, double glazing and there is also a storage cupboard which is in the communal area and backs onto the panty. Externally there are communal gardens.

For more information and to book your viewing please call our Gosforth sales team on 0191 236 2070.

Tenure

The agent understands the property to be leasehold. However, this should be confirmed with a licenced legal representative.

Council Tax Band *A*.

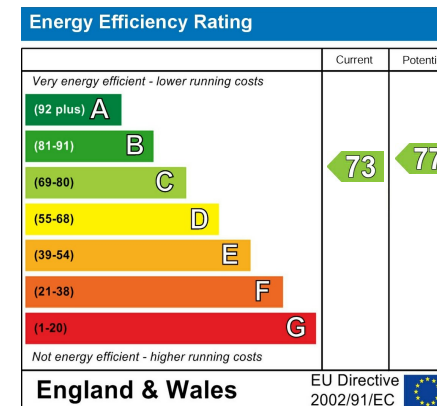


Lounge 18'2" x 11'7" (5.54 x 3.54)

Kitchen 9'5" x 7'6" (2.88 x 2.29)

Bedroom One 13'3" x 9'11" (4.04 x 3.03)

Bedroom Two 9'6" x 7'9" (2.89 x 2.35)



The difference between house and home

You may download, store and use the material for your own personal use and research. You may not republish, retransmit, redistribute or otherwise make the material available to any party or make the same available on any website, online service or bulletin board of your own or of any other party or make the same available in hard copy or in any other media without the website owner's express prior written consent. The website owner's copyright must remain on all reproductions of material taken from this website.



www.janforsterestates.com

Gosforth
High Heaton
Tynemouth
Property Management Centre

0191 236 2070
0191 270 1122
0191 257 2000
0191 236 2680

