







2



1



1

- Popular Location
- Two Bedrooms
- Front and Rear Gardens
- Gas Central Heating
- Viewing Recommended
- Ground Floor Flat
- Unfurnished
- Close To Amenities
- Council Tax Band \*A\*
- Call For More Information







This two double bedroom, ground floor flat is located in a popular part of High Heaton and available Mid March on an unfurnished basis.

The location is within close proximity to a wealth of local amenities including well regarded schools, Paddy Freemans Park, and The Freeman Hospital. Local transport links and trunks road offer access into Newcastle City Centre and surrounding areas.

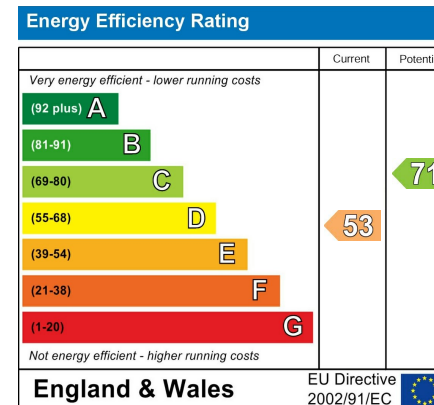
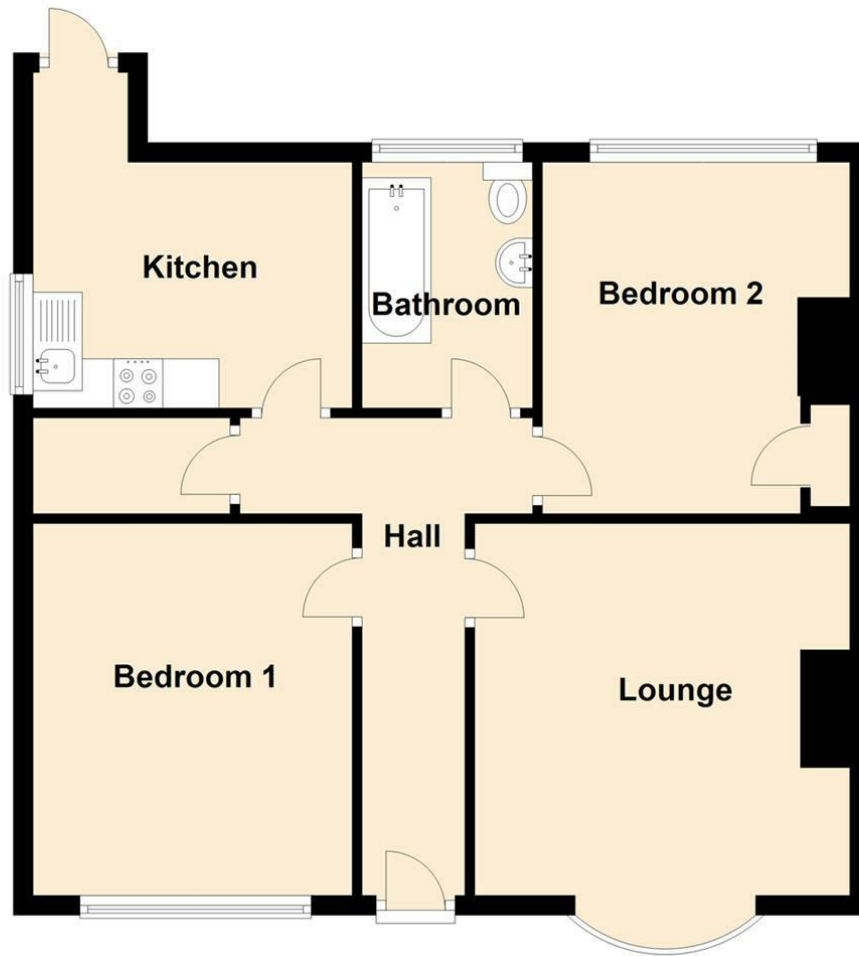
Briefly comprising: - entrance hallway, bright and airy lounge with bay window and mantelpiece, kitchen with fitted wall and floor units and integrated oven and hob, two double bedrooms; the second benefiting from a storage cupboard, and there is a three-piece bathroom with shower over the bath. Externally there are lawned gardens to the front and rear.

For more information and to book a viewing, please call our High Heaton branch on 0191 270 1122.

Council Tax Band \*A\*.



## Ground Floor



## The difference between house and home

You may download, store and use the material for your own personal use and research. You may not republish, retransmit, redistribute or otherwise make the material available to any party or make the same available on any website, online service or bulletin board of your own or of any other party or make the same available in hard copy or in any other media without the website owner's express prior written consent. The website owner's copyright must remain on all reproductions of material taken from this website.



[www.janforsterestates.com](http://www.janforsterestates.com)

Gosforth  
High Heaton  
Tynemouth  
Property Management Centre

0191 236 2070  
0191 270 1122  
0191 257 2000  
0191 236 2680

