







1



1



1

- Gemini Bungalow
- Well Presented
- Built in Wardrobes
- Close to Amenities
- Council Tax Band \*B\*
- Sought After Area
- One Double Bedroom
- Parking Available
- Public Transport Links





Jan Forster Estates welcome to the sale market this well-presented one bedroom Gemini bungalow, located in Melton Park - a very desirable residential area.

The home is close to a wealth of local facilities nearby, with more available on Gosforth High Street and Newcastle city centre via regular bus routes and the Metro service.

The ground floor of the property briefly comprises: - open plan living space, kitchen with floor and top units, and a modern shower room W, stairs lead to the mezzanine level, which is a double bedroom boasting built-in wardrobes. The property further benefits from electric heating and double glazing. Externally, there is parking available to the front of the property

For more information or to book your viewing, please, call our Gosforth office on 0191 236 2070.

#### Tenure

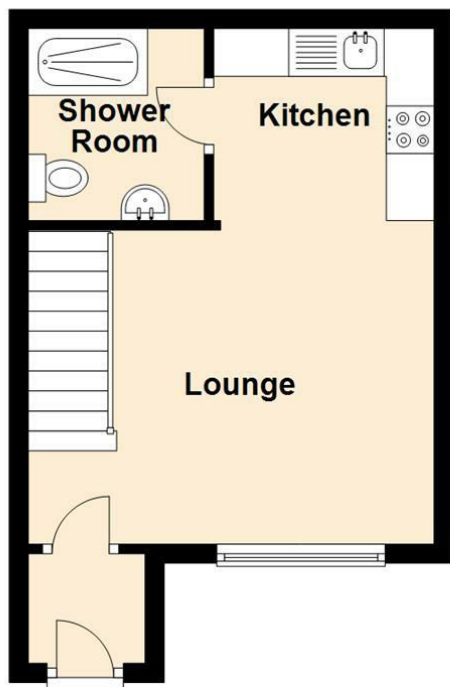
The agent understands the property to be leasehold. However, this should be confirmed with a licensed legal representative.

Council Tax band \*B\*.

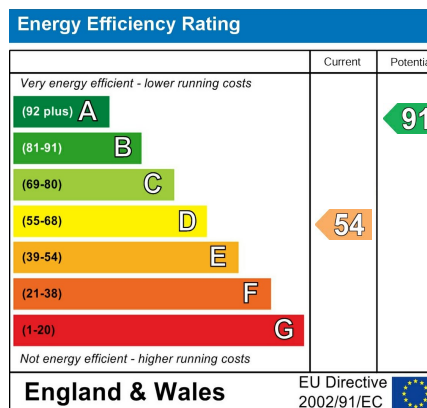
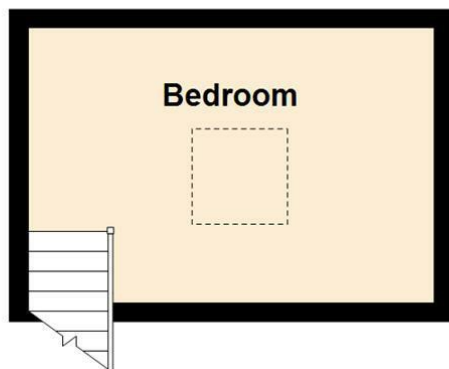




Ground Floor



First Floor



## The difference between house and home

You may download, store and use the material for your own personal use and research. You may not republish, retransmit, redistribute or otherwise make the material available to any party or make the same available on any website, online service or bulletin board of your own or of any other party or make the same available in hard copy or in any other media without the website owner's express prior written consent. The website owner's copyright must remain on all reproductions of material taken from this website.



[www.janforsterestates.com](http://www.janforsterestates.com)

**Gosforth**  
**High Heaton**  
**Tynemouth**  
**Property Management Centre**

**0191 236 2070**  
**0191 270 1122**  
**0191 257 2000**  
**0191 236 2680**

