



Jan Forster  
FOR SALE





- Well Presented
- Popular Location
- Two Bathrooms
- Council Tax Band \*C\*
- Viewing Recommended
- Four Bedrooms
- Off Street Parking
- Close To Amenities
- Leasehold
- Call For More Information







\*\* Video Tour on our YouTube Channel | <https://youtu.be/RXofJdQjQPM>  
\*\*

Jan Forster Estates are pleased to offer this well presented, four-bedroom semi-detached property positioned on Burnbridge, Seaton Burn. An ideal purchase for the growing family.

The location benefits from a wealth of local amenities including schools, shops and leisure facilities with further amenities easily accessed via regular bus routes and the A1 & A19 motorways within Gosforth and Newcastle city centre.

Internally the accommodation briefly comprises to the ground floor: - entrance porch, hallway, bright and airy lounge and a kitchen dining room with fitted high gloss wall and floor units, integrated oven and hob, microwave, fridge/freezer, washing machine and dishwasher along with a large under-stair storage cupboard. French doors offer access to the sunny conservatory, which leads to the rear garden via French doors. There is also a ground floor double bedroom with built-in storage and an en suite. To the first floor there are three good-sized bedrooms, the main with built-in storage and there is also a modern family bathroom WC with a walk-in shower and under sink storage. The property further benefits from gas central heating and double glazing.

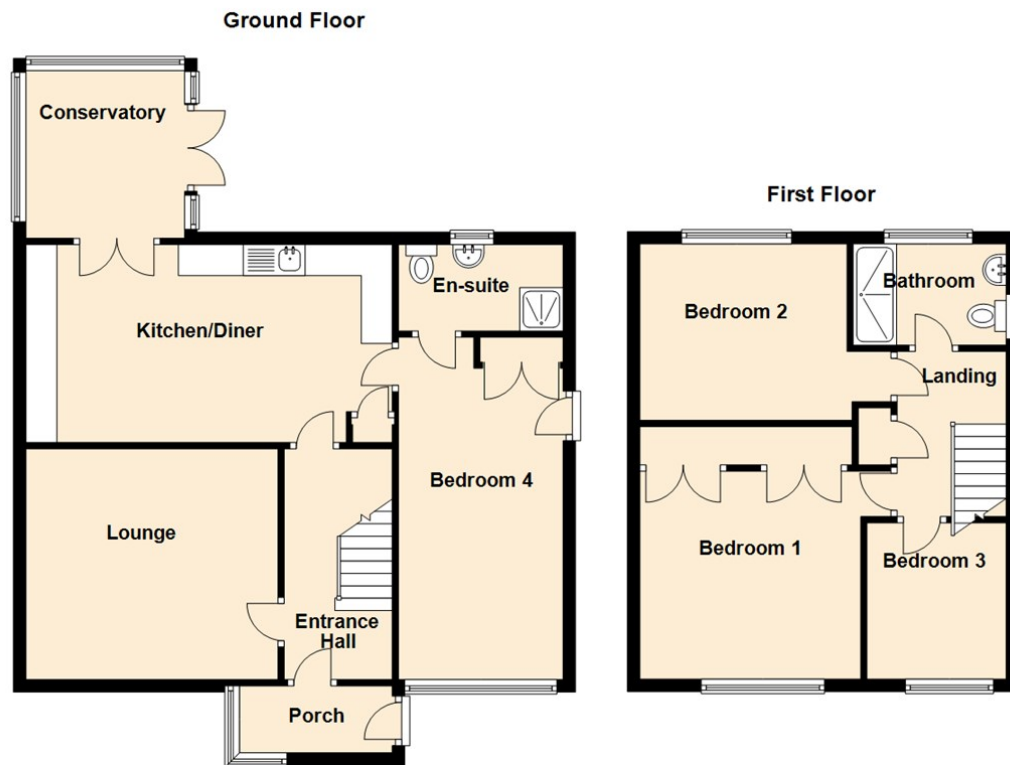
Externally there is a garden and driveway to the front for off street parking, a side garden, and there is a generous garden to the rear with a lawn and patio areas a double outdoor electricity point, and outdoor tap.

For more information or to book a viewing please call our Gosforth sales team on 0191 236 2070.

#### Tenure

The agent understands the property to be leasehold. However, this should be confirmed with a licensed legal representative.

Council Tax band \*C\*.



Lounge 13'2" x 12'8" (4.02 x 3.88)

Kitchen Dining Room 10'4" x 17'6" (3.17 x 5.35)

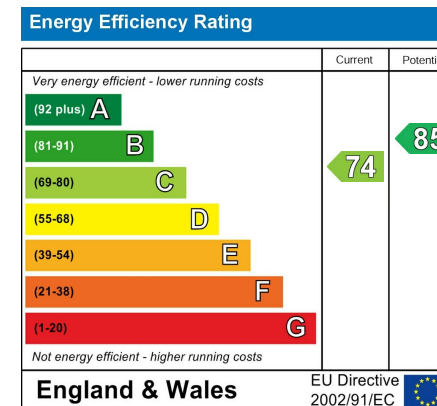
Conservatory 7'1" x 9'0" (2.18 x 2.76)

Bedroom One 10'6" x 11'1" (3.21 x 3.40)

Bedroom Two 13'0" x 9'9" (3.98 x 2.99)

Bedroom Three 8'0" x 9'0" (2.44 x 2.76)

Bedroom Four 8'1" x 17'7" (2.47 x 5.37)



## The difference between house and home

You may download, store and use the material for your own personal use and research. You may not republish, retransmit, redistribute or otherwise make the material available to any party or make the same available on any website, online service or bulletin board of your own or of any other party or make the same available in hard copy or in any other media without the website owner's express prior written consent. The website owner's copyright must remain on all reproductions of material taken from this website.



[www.janforsterestates.com](http://www.janforsterestates.com)

Gosforth

High Heaton

Tynemouth

Property Management Centre

0191 236 2070

0191 270 1122

0191 257 2000

0191 236 2680

