





2



1



2

- En Suite
- Available September
- Allocated Parking
- Secure Entry System
- Furnished
- First Floor Flat
- Excellent Location





Available mid September on a furnished basis, this beautifully presented two bedroom first floor apartment is situated in the highly sought after Monarch Court Longbenton, convenient for access to all the local shops, schools and within close proximity to the local Metro station. The property benefits from double glazing, ample storage and gas central heating.

Briefly comprising:- light and spacious open plan lounge/kitchen with Juliet balcony to front and back two double bedrooms with en-suite shower and a family bathroom WC. Externally there are communal gardens, a secure entry system and an allocated parking bay offering off street parking.

For viewings please call our lettings team on 0191 270 1122.

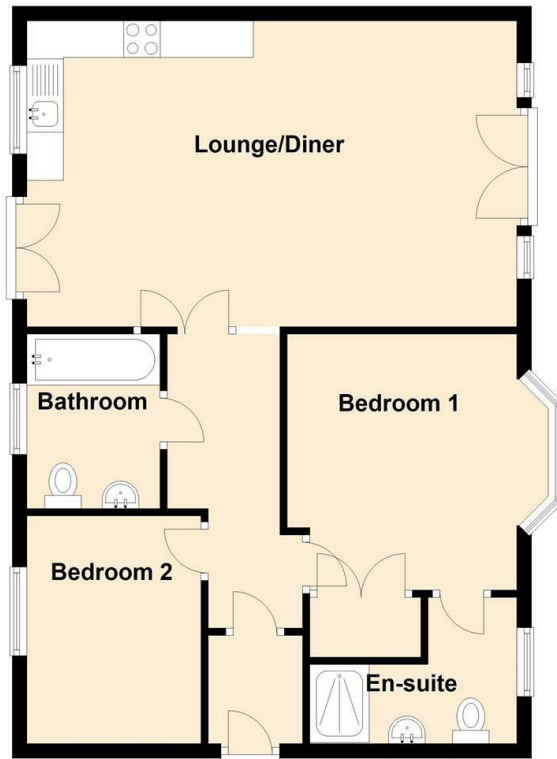
COVID-19 Guidelines

Although it is not mandatory, we do recommend that viewers wear appropriate PPE to protect themselves and others.

Council Tax Band *A*.



First Floor



The difference between house and home

You may download, store and use the material for your own personal use and research. You may not republish, retransmit, redistribute or otherwise make the material available to any party or make the same available on any website, online service or bulletin board of your own or of any other party or make the same available in hard copy or in any other media without the website owner's express prior written consent. The website owner's copyright must remain on all reproductions of material taken from this website.

Should you decide to rent a property, a completed Rental Application Form is required for each adult proposing to rent the property, along with 2 forms of identification, including verification of your Right To Rent in the United Kingdom and a **Holding Deposit Fee equivalent of one week's rent rounded down to the nearest £5.00**. This Holding Deposit will be off-set against the first month's rental payment received.

The Holding Deposit is non-refundable should you fail the Right To Rent checks, you provide misleading information, you withdraw from the property or you fail to take reasonable steps to enter into a tenancy within the agreed timescale. The Holding Deposit does not constitute the offer of acceptance of a tenancy until such time as successful referencing is completed and the Tenancy Agreement is signed and executed by both parties. We will liaise with you to agree on a start date for the tenancy.

Schedule 2 of the Tenant Fees Act 2019 – Treatment of the Holding Deposit – governs how we deal with the Holding Deposit. This Schedule applies where a Holding Deposit is paid to either a Landlord or Letting Agent in respect of a proposed tenancy of housing in England. In this Schedule, 'the deadline for agreement' means the fifteenth day of the period beginning with the day on which the Landlord or Letting Agent receives the Holding Deposit. Unless both parties agree otherwise, this Holding Deposit must be returned to you if it is decided by the Landlord or Letting Agent not to proceed with the tenancy after a Holding Deposit has been paid. The deposit must be returned to you no later than 7 days after a decision is made not to proceed.

Energy Efficiency Rating		
	Current	Potential
Very energy efficient - lower running costs		
(92 plus) A		
(81-91) B	81	81
(69-80) C		
(55-68) D		
(39-54) E		
(21-38) F		
(1-20) G		
Not energy efficient - higher running costs		
England & Wales		EU Directive 2002/91/EC

Gosforth	0191 236 2070
Newcastle	0191 284 4050
Forest Hall	0191 605 3134
High Heaton	0191 270 1122
Low Fell	0191 487 0800
Tynemouth	0191 257 2000
Whitley Bay	0191 251 3000
Property Management Centre	0191 236 2680