





1



1



1

- City Centre Living
- Excellent Location
- Secure Entry System
- Leasehold
- Second Floor
- One Bedroom Apartment
- Lift To All Floors
- Council Tax Band A
- Immaculate Throughout
- **MUST BE VIEWED**





** Video Tour on our YouTube Channel |
<https://youtu.be/Y5ILR2lyDjs> **

CITY CENTRE LIVING | ONE BEDROOM APARTMENT | IMMACULATE THROUGHOUT

Jan Forster Estates are pleased to present to the market this one bedroom second floor apartment in the centre of Newcastle. Located within Clarendon House on Clayton Street West the property will appeal to a variety of buyers.

Clarendon House, City Centre is an excellent location within close proximity to the Central Station, The Gate, St. James' Park, Universities as well as Eldon Square and Northumberland Street. It is surrounded by great restaurants, shops, cafes, bars and everything else that City Centre living has to offer.

Internally the property briefly comprises:- communal entrance with stairs and/or lift access, apartment access, hallway, double bedroom with built-in storage, three piece bathroom with shower over the bath, stunning lounge opening onto the kitchen area with dual windows allowing natural light to flood in.

Viewings are recommended. To book yours or for more information please call 0191 236 2070.

Tenure

The agent understands the property to be leasehold. However, this should be confirmed with a licenced legal representative.

COVID-19 Guidelines

Although it is not mandatory, we do recommend that viewers wear appropriate PPE to protect themselves and others.

Council Tax band *A*.

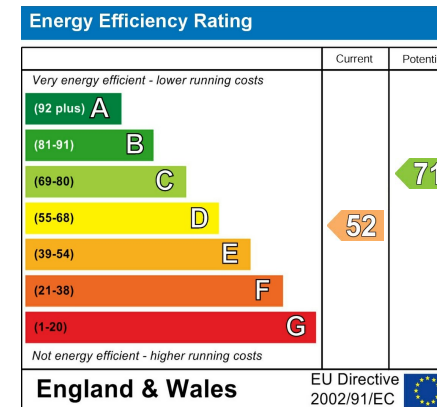
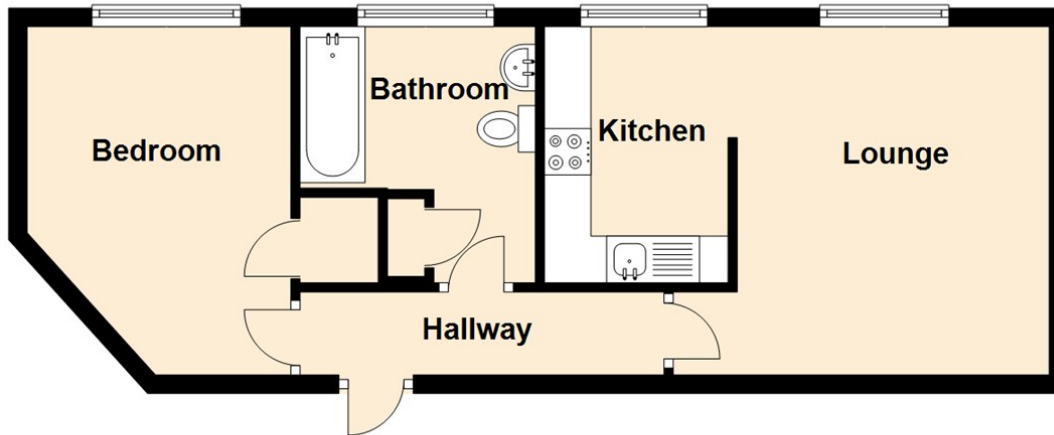


Lounge 13'5" x 11'1" (4.10 x 3.40)

Kitchen 6'0" x 9'11" (1.83 x 3.04)

Bedroom 11'7" x 9'1" (3.54 x 2.78)

Second Floor



The difference between house and home

You may download, store and use the material for your own personal use and research. You may not republish, retransmit, redistribute or otherwise make the material available to any party or make the same available on any website, online service or bulletin board of your own or of any other party or make the same available in hard copy or in any other media without the website owner's express prior written consent. The website owner's copyright must remain on all reproductions of material taken from this website.



www.janforsterestates.com

Gosforth

0191 236 2070

Newcastle

0191 284 4050

High Heaton

0191 270 1122

Tynemouth

0191 257 2000

Low Fell

0191 487 0800

Property Management Centre

0191 236 2680

